

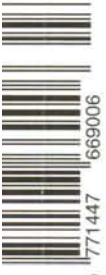
LINO

AUSTRALIA & NEW ZEALAND'S PREMIER DESIGN LIFESTYLE MAGAZINE
4th Anniversary - ISSUE No.19 2007

DESIGN
ARCHITECTURE
PHOTOGRAPHY
FASHION

19

Members: HERRADA International Council
of Creative Design Associations
AUSTRALIA \$9.95 incl GST
NEW ZEALAND \$10.00 incl GST



Jasper Knight speaks to Dr Dougal Phillips
Optimistic Futurism - Richard Seymour
2007 Hokonui Fashion Awards
New Legend - The Fight for Self-Determination in the Kimberley
Where Fashion and Architecture Collide:
The Design Aesthetic of Shinmi Park



Jo Milikan
Landscape 1
122 x 101.5 cm
Oil on Canvas

From Little Acorns Do Mighty Oak Trees Grow

In a world of mass production and brand hype, it is an uncommon pleasure to find a company that fits a different form.

Ten years ago, New Zealand French Provincial furniture maker Robert Hood, founder of Ashton Grove, started making coffee tables in a spare bedroom of his house. Today, Ashton Grove is an international success story.

So what is it that makes Ashton Grove so special? In a word: "Uncompromising". Ashton Grove is a vertically integrated company, which means no middleman margins. The Ashton Grove hallmark is to craft French Provincial furniture to the highest quality with the finest timbers - a truly hand made product which is crafted from French Oak and American Cherry wood.

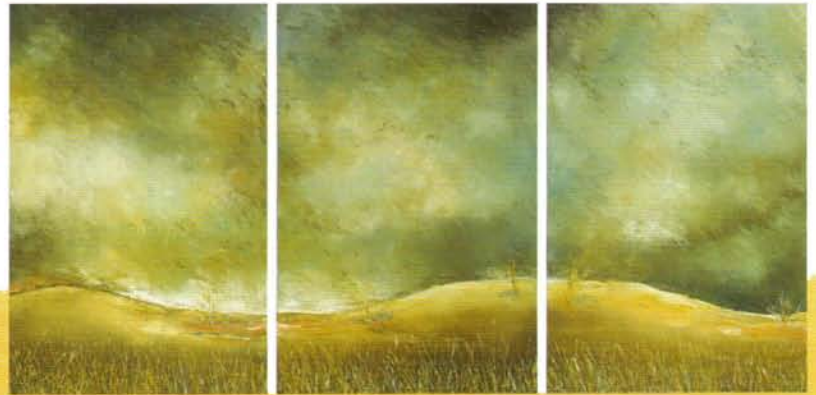
Ashton Grove timbers are enriched with layers of traditional umbers, tar and finished with hand-rubbed shellacs and waxes, resulting in a patina even the most discerning buyer will appreciate.

Every piece is hand-made individually. The timber is hand sanded, stained, distressed and waxed with care and attention to detail. It is this hand imperfection, which paradoxically makes the piece perfect.



Jo Millikan
End of the South Coast
 152 x 112 cm
 Oil on Canvas

Jo Millikan
Summer Storm in The High Country
 76.5 x 80.5 cm
 Oil on Canvas

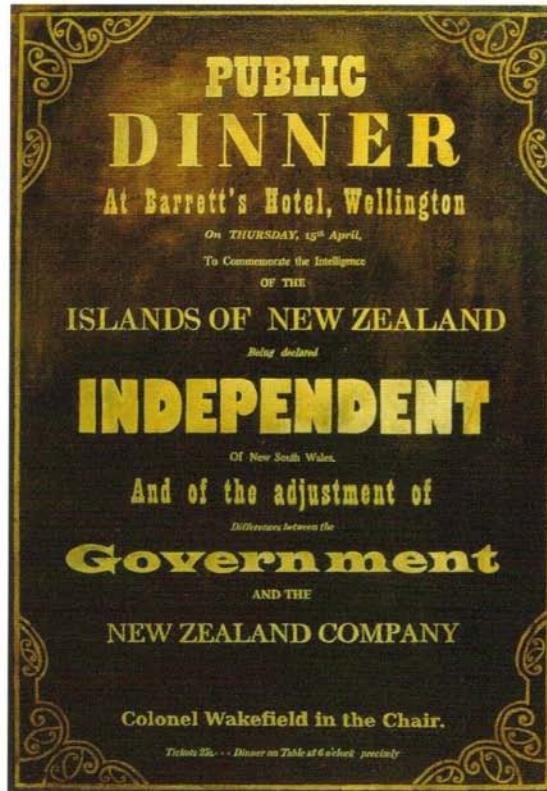


French provincial furniture is characterized by simple, timeless lines and was first produced in France in the mid-1700s. Ashton Grove specializes in both French Provincial and Oak Country Furniture.

According to Crisanne Fox, Ashton Grove's designer, "Australian's are very down to earth and love the simplicity of French Provincial and Oak Country Furniture, and it works well in contemporary apartments, period homes and neo-Georgian spaces".

Now this exceptionally creative 'trans-Tasman company' is making a huge impression with local artists on both sides of the Tasman, by allowing the artists to use their showrooms to exhibit their work. This foresight deserves applause!

Opening October 11th this year, Ashton Grove will be using its prime South Yarra location to host an exhibition by Ms Millikan, focusing on the unique Australian landscape, and the memory and emotion it evokes.



Sandy Rogers
Public Dinner
85 x 110 cm
Oil on Canvas



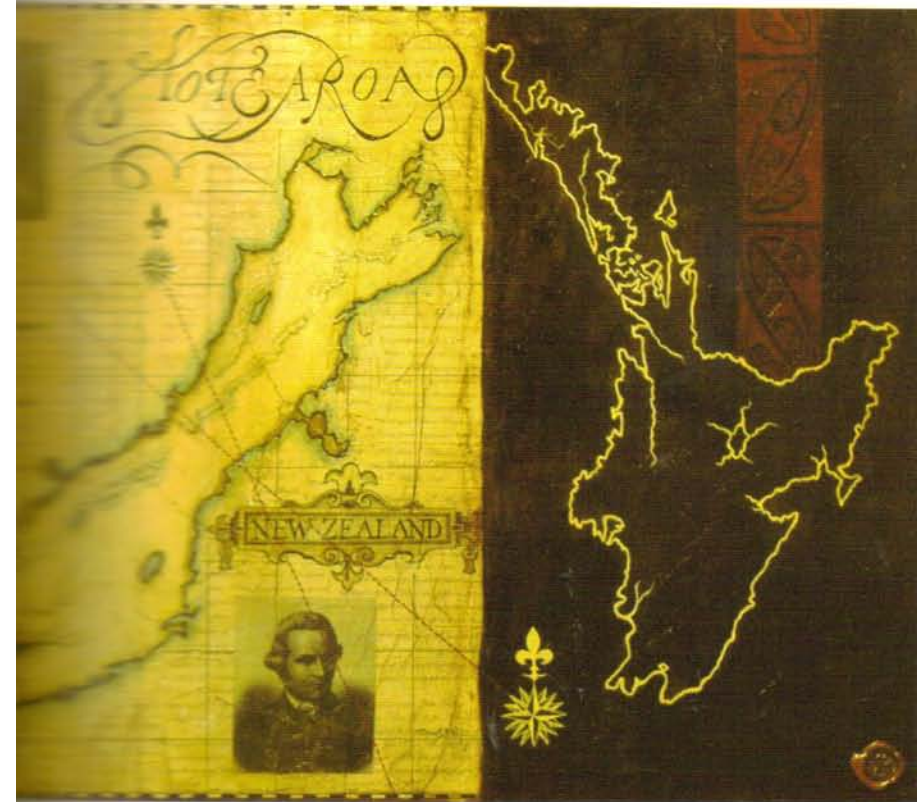
Ben McAlpine
Caspian Tern in Cook Strait
146 x 114 cm
Oil on Canvas

"I have an affinity with the Australian landscape after living in many parts of Australia and trips to the outback. My aim as an artist is to paint beautiful pictures that evoke emotion; a memory, a feeling, a time, a place once visited, a place yet to be visited. I use this connection to find the essence that is Australia, layering the paint to create an atmosphere, a vastness, an emptiness - an intimate study," said Ms Millikan.

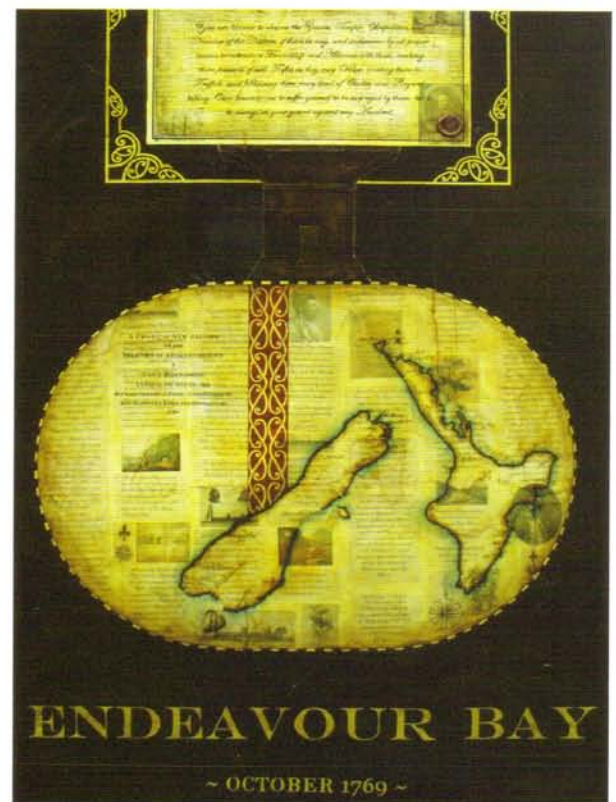
The exhibition will run for four weeks, and will be open to the public. Ashton Grove has a long history of supporting local artists in their native New Zealand, but this is the first time they have hosted an official exhibition here in Australia.

Ben McAlpine is a New Zealand painter whose work is appearing in the Ashton Grove showroom in Christchurch from 6 - 30 September. The artist describes his exhibition titled 'Home' as "stylised birdscares set in the Marlborough sounds. To anyone who sees these paintings it is obvious that one of my childhood art heroes was Don Binney," says McAlpine.

Sandy Rogers says, "I have been painting all my life and after years of study, work, travel, I realised how little I knew of, not only my, but all of New Zealand's' heritage, thus I have made it my personal goal to study, research, read, question and create as much information as possible." These impressive works reflect that achievement and can be seen at the Ashton Grove showrooms in Wellington.



Sandy Rogers
New Aotearoa
70 x 10 cm



Sandy Rogers
Endeavour Bay
110 x 70 cm

According to Crisanne Fox, head of Australian Design, "We've always believed that the unique nature and passion behind each of our handcrafted pieces of furniture is a form of art, now we simply wish to use our success to give something back to both those artists who are equally as creative, and the Australian artistic community in general."

The company also regularly uses its showroom to display a range of individual pieces by various Australian artists, across a broad range of artistic spectrums, including glass art, sculpture and paintings.

"Essentially, we are passionate about maximising the spaces in which people live, and we know that our customers are often as fond of collecting art as they are of collecting the aspirational pieces of furniture that will come to define their home," continued Ms Fox, "We simply wish to offer complete interior design ideas, and art is a huge part of that, so the decision seemed natural."

Millikan's Exhibition will be held at Ashton Grove's only Australian showroom, located at 336A Toorak Road, South Yarra, Melbourne, from October 11th - November 8th 2007.
www.ashtongrove.co.nz



Ben McAlpine
Diago Albatross Coming Home
146 x 114 cm
Oil on Canvas